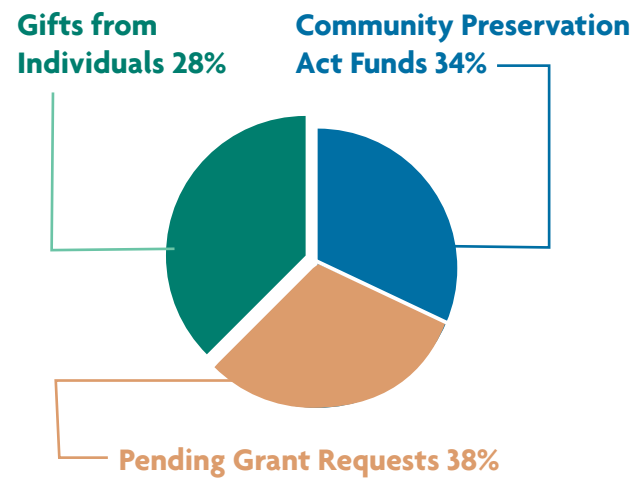


Proposed Funding Sources for Open Space in Our Neighborhoods



Your contribution will help raise a critical 28% of the funding needed to save open space in our neighborhoods.

All of us Working Together

With support from the City's Community Preservation Act Fund and its own capital reserves, the Trust has been able to act quickly in responding to the latest two open space opportunities. Costs for land acquisition at the Brickyard Brook Conservation Area and the Pomeroy Meadows Conservation Area, combined with trail building at the latter, total \$203,000. Help the Trust raise the last 28% in funds needed to ensure the success of these projects.

Please join your friends and neighbors in making the protection of open space part of your legacy by contributing generously to the Trust.

Make a Contribution

Contributions to the Open Space in Our Neighborhoods Campaign are tax deductible. Please make your contributions payable to the Pascommuck Conservation Trust, and send to:

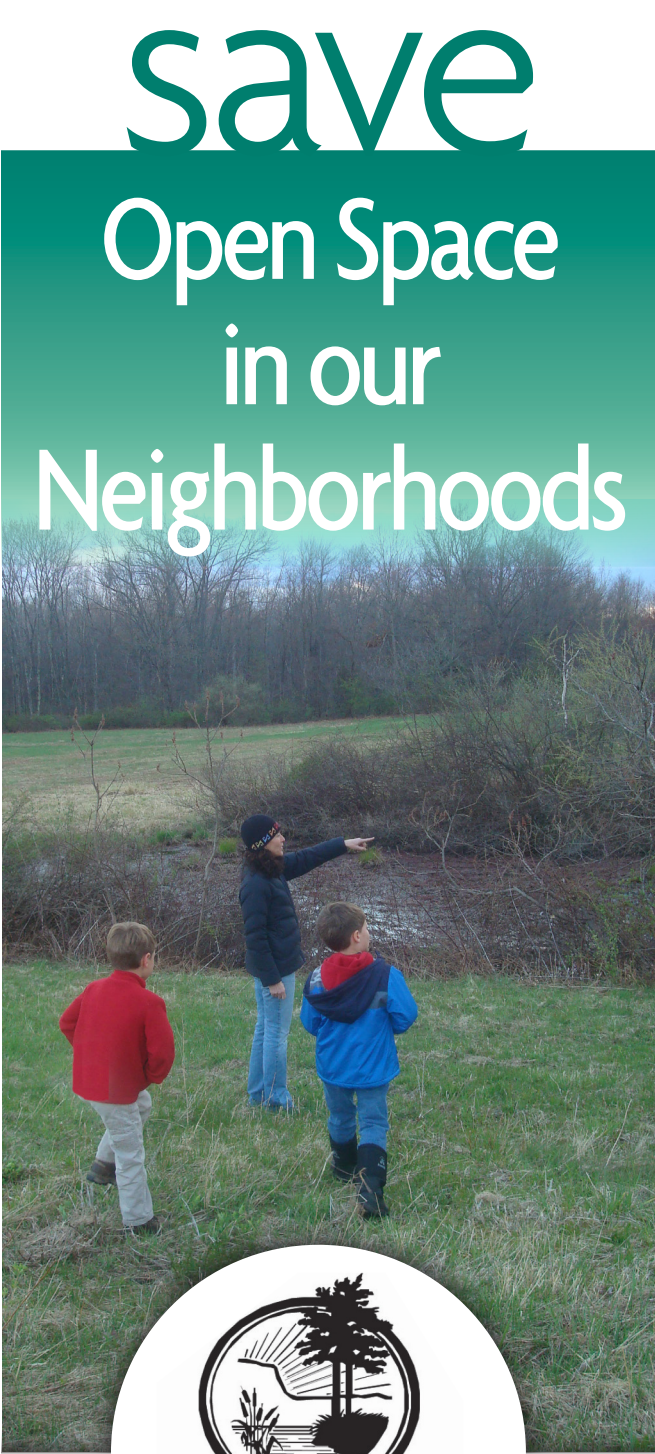
The Pascommuck Conservation Trust
P.O. Box 806
Easthampton, MA 01027

Gifts of Stock
A donation of appreciated securities can have many financial benefits for donors. If you prefer to make a gift of appreciated stock, please contact Doug Wheat at (413) 433-3332.

Pascommuck Conservation Trust Board Members

- Dawn Ackley, Clerk
- Roger Anderson
- John Bator, President
- William Burgart
- Michael Caron
- Molly Goodwin
- Stan Jasinski
- Marty Klein
- Tom Lautzenheiser
- Lydia Omasta
- Shirley Smith, Treasurer
- Sue Walz, Vice President
- Doug Wheat

May 2012



Open Space in our Neighborhoods

Saving these Treasures

The sound of a flowing stream, the fragrance of white pine, and the color of a nearby bloom are immeasurable in their value. So too is the quality of our neighborhoods when we and our families have nearby places for outdoor experience and activity.

Recognizing the need to preserve the forests, fields, and streams in our midst, the Pascommuck Conservation Trust has been involved over the years in protecting more than 465 acres in 16 neighborhoods across Easthampton. These lands include:

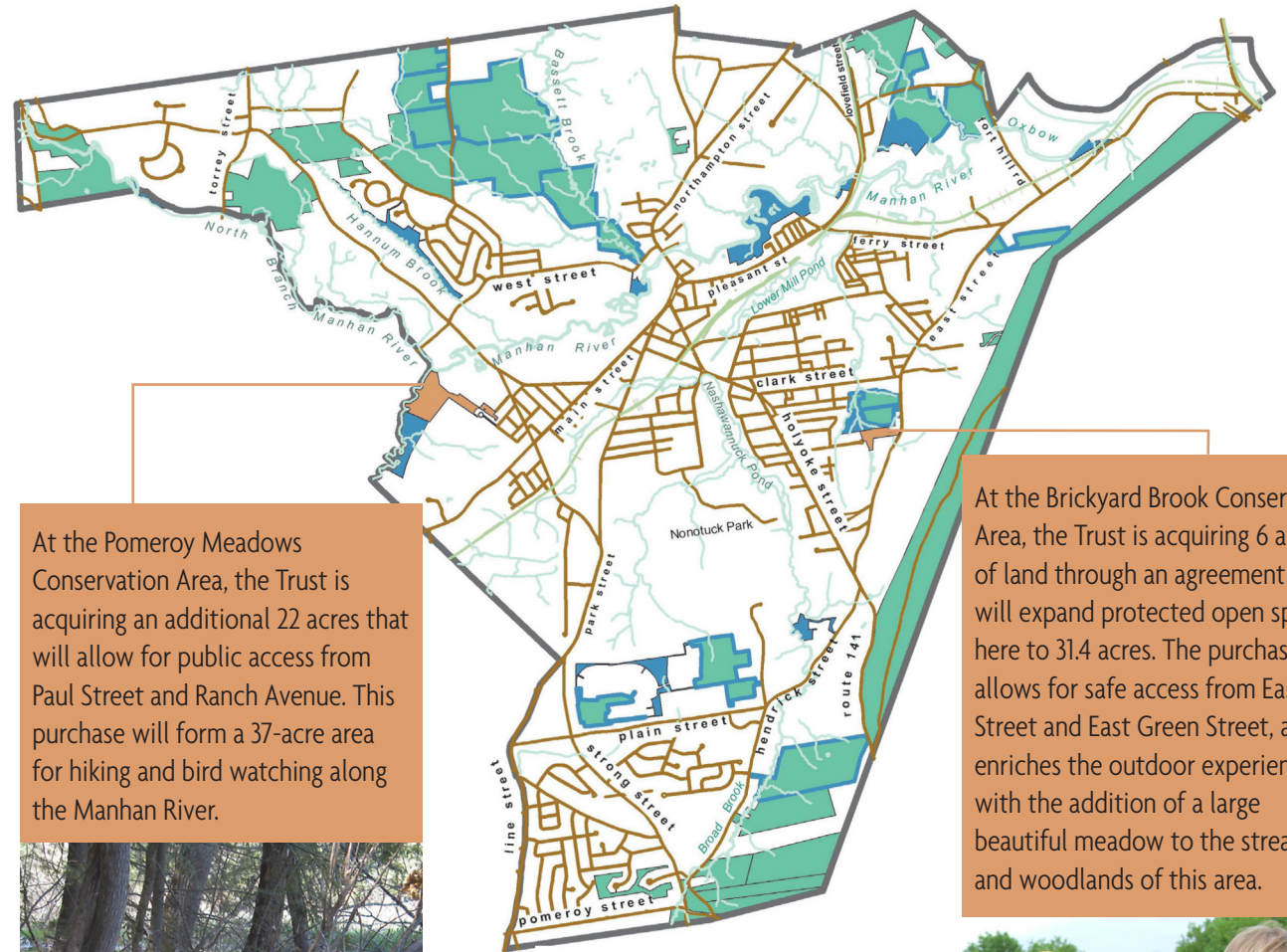
- Broad Brook Meadows Conservation Area off Hendrick Street
- Echodale Farm on Park Hill
- Hannum Brook Conservation Area along Carillon Circle and Hannum Brook Drive

The Challenge

Unique land acquisition opportunities require immediate action. Most recently, the Trust has been making purchases to expand open space at the Brickyard Brook Conservation Area and the Pomeroy Meadows Conservation Area. (See details at right.)

Public and private support is essential to the success of this work. Make your financial contribution today so that the Trust can meet the goals of these two projects and continue to preserve open space in our neighborhoods.

Easthampton, Massachusetts



At the Pomeroy Meadows Conservation Area, the Trust is acquiring an additional 22 acres that will allow for public access from Paul Street and Ranch Avenue. This purchase will form a 37-acre area for hiking and bird watching along the Manhan River.

At the Brickyard Brook Conservation Area, the Trust is acquiring 6 acres of land through an agreement that will expand protected open space here to 31.4 acres. The purchase allows for safe access from East Street and East Green Street, and enriches the outdoor experience with the addition of a large beautiful meadow to the streams and woodlands of this area.

