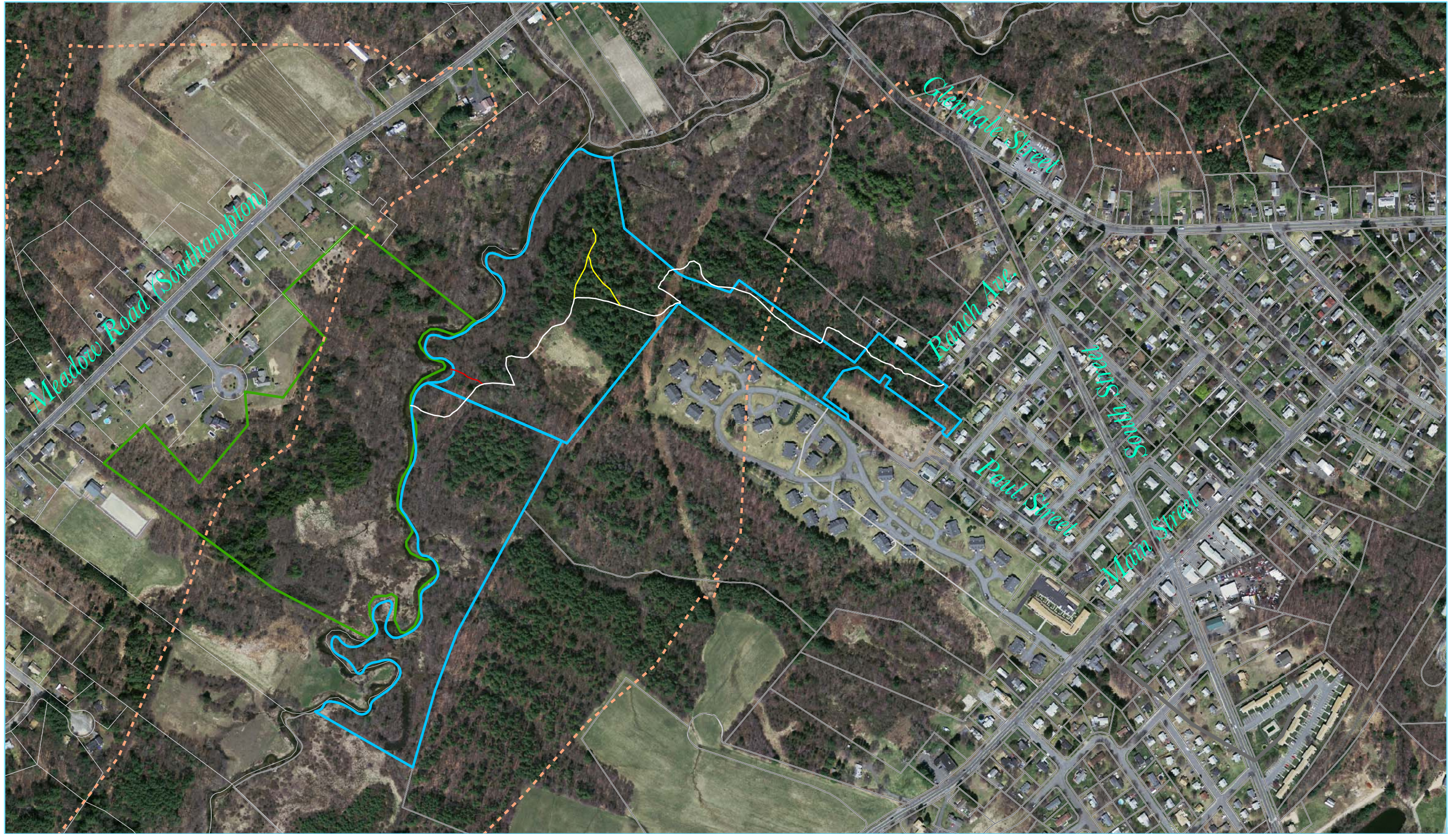


Pomeroy Meadows Conservation Area

Pascommuck Conservation Trust - December 11, 2013
 WWW.PCTLAND.ORG



Protect this sensitive natural area, trails, and other visitors: please no pets, disturbing wildlife or plants, dumping/yard waste, or off-road vehicles including bicycles. Please stay on marked trails. Thank you for your consideration.

	Beckley Trail: Parking and entrance at Ranch Avenue		Frog Pond view		River Bend view
	Pomeroy Meadows Conservation Area		Whittemore Conservation Area (Southampton)		Other property boundaries
	State-designated critical wildlife/plant habitat				